

Big Valley School Annual Education Results Report

<https://bigvalley.clearview.ab.ca/>



**Clearview
Public Schools**

We All Belong – We All Succeed

School Profile: Big Valley School is located 35 km south of Stettler. We are an energetic school with approximately 100 students from Pre K to grade 9.



Mission and Core Values:

Big Valley School and our staff believe that learning is an active process and we strive to provide students with voice and choice in their everyday learning. A safe and caring environment is fostered where learners are encouraged to have a growth mindset in their learning experience.

School Motto / Tagline:
BVS believes in Respecting

Ourselves

Each other

Our Environment



Program Highlights:

Big Valley School promotes student success through a variety of learning opportunities including:

- Strengthening literacy through assessment and targeted classroom instruction and intervention.
- CTF courses within Big Valley School. Junior High students take CTF options at Wm. E. Hay School.
- Junior High Leadership class where students mentor younger grades through buddy reading, lunches, and planning assembly activities.
- Building knowledge and skills in educational technology, including assistive technology.
 - 1:1 Chromebooks in grades 3-9.
- Involved with the Experiences Canada Program for student exchanges.



Character Education, Whole child development:



Our staff believes in supporting the whole child. In doing this we have the following available at Big Valley School:

- A Family School Liaison that provides counseling and support for our students.
- Attribute of the Month to support students in learning key virtues they will carry on through their life.
- CARS programming that offer both universal and targeted programming for students that may need support building healthy relationships, emotional regulation or resiliency skills.
- House teams and monthly assemblies where students get to be part of the positive school community and take part in fun activities.

Athletics & Extra-Curricular Programming:

At Big Valley School we are committed to providing our students with a well rounded education. Part of providing a well rounded education includes making sure that students have access to athletics and extracurricular activities. We are currently offering the following Athletics and extracurricular activities:

- Volleyball
- Basketball
- Badminton
- Cross Country
- Track and Field
- Art Club
- Video Games Club



Summary AEAM Results

Fall 2024 Required Alberta Education Assurance Measures – Overall Summary

School: 4601 Big Valley School

Fall 2024 Required Alberta Education Assurance Measures – Overall Summary

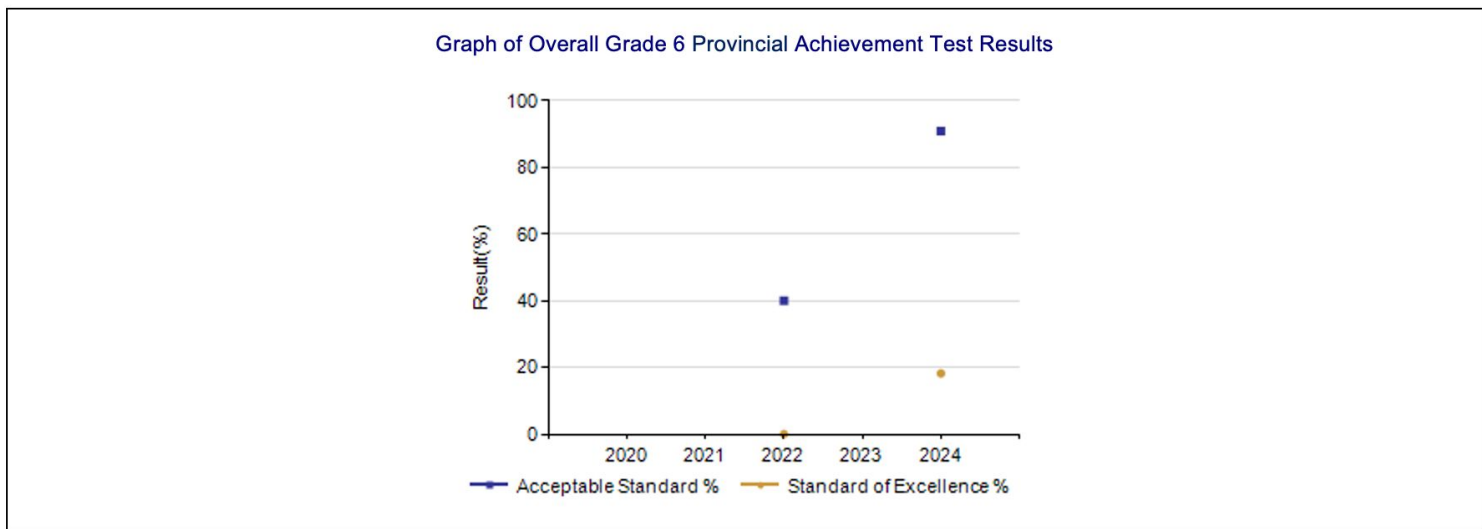
| Assurance Domain | Measure | Big Valley School | | | Alberta | | | Measure Evaluation | | |
|--------------------------------|---|-------------------|-------------------|----------------------|----------------|-------------------|----------------------|--------------------|------------------------|-----------|
| | | Current Result | Prev. Year Result | Prev. 3 Year Average | Current Result | Prev. Year Result | Prev. 3 Year Average | Achievement | Improvement | Overall |
| Student Growth and Achievement | Student Learning Engagement | 82.0 | 56.7 | 70.3 | 83.7 | 84.4 | 84.8 | n/a | Improved | n/a |
| | Citizenship | 87.1 | 72.2 | 76.2 | 79.4 | 80.3 | 80.9 | Very High | Improved | Excellent |
| | 3-year High School Completion | n/a | n/a | n/a | 80.4 | 80.7 | 82.4 | n/a | n/a | n/a |
| | 5-year High School Completion | n/a | n/a | n/a | 88.1 | 88.6 | 87.3 | n/a | n/a | n/a |
| | PAT8: Acceptable | 90.9 | * | n/a | 68.5 | 66.2 | 66.2 | Very High | n/a | n/a |
| | PAT8: Excellence | 18.2 | * | n/a | 19.8 | 18.0 | 18.0 | Intermediate | n/a | n/a |
| | PAT9: Acceptable | * | * | n/a | 62.5 | 62.6 | 62.6 | * | n/a | n/a |
| | PAT9: Excellence | * | * | n/a | 15.4 | 15.5 | 15.5 | * | n/a | n/a |
| | Diploma: Acceptable | n/a | n/a | n/a | 81.5 | 80.3 | 80.3 | n/a | n/a | n/a |
| | Diploma: Excellence | n/a | n/a | n/a | 22.6 | 21.2 | 21.2 | n/a | n/a | n/a |
| Teaching & Leading | Education Quality | 88.3 | 66.2 | 75.9 | 87.6 | 88.1 | 88.6 | High | Improved | Good |
| Learning Supports | Welcoming, Caring, Respectful and Safe Learning Environments (WCRSLE) | 91.8 | 79.5 | 81.8 | 84.0 | 84.7 | 85.4 | n/a | Improved | n/a |
| | Access to Supports and Services | 84.4 | 70.2 | 73.6 | 79.9 | 80.6 | 81.1 | n/a | Improved | n/a |
| Governance | Parental Involvement | 82.6 | 20.0 | 47.4 | 79.5 | 79.1 | 78.9 | Very High | Improved Significantly | Excellent |



Academic Achievement: PAT results

Provincial Achievement Test Results – Grade 6 PAT By Number Enrolled Measure History

| Grade 6 PAT Results By Number Enrolled Measure History | | | | | | | | | | | | | |
|--|-------------------|------|------|------|------|--------------------|-------------|---------|---------|------|--------|--------|--------|
| | Big Valley School | | | | | Measure Evaluation | | | Alberta | | | | |
| | 2020 | 2021 | 2022 | 2023 | 2024 | Achievement | Improvement | Overall | 2020 | 2021 | 2022 | 2023 | 2024 |
| N | n/a | n/a | 10 | 4 | 22 | n/a | n/a | n/a | n/a | n/a | 56,482 | 57,655 | 60,804 |
| Acceptable Standard % | n/a | n/a | 40.0 | * | 90.9 | Very High | n/a | n/a | n/a | n/a | 67.8 | 66.2 | 68.5 |
| Standard of Excellence % | n/a | n/a | 0.0 | * | 18.2 | Intermediate | n/a | n/a | n/a | n/a | 20.1 | 18.0 | 19.8 |



Notes:

- Both our Grade 5 and 6 students wrote the Social Studies 6 PAT. All students met either the acceptable standard or standard of excellence.
- Due to the low number of students writing the Grade 9 PAT exams, the province did not release any achievement results in Big Valley's 5 year roll up.

Citizenship

Reported by Teacher, Parent and Student results

- We achieved a very high response rate from all stakeholders, which is an improvement from last year. We continue to plan community activities that are student driven, and we plan to have an active student council again this year.

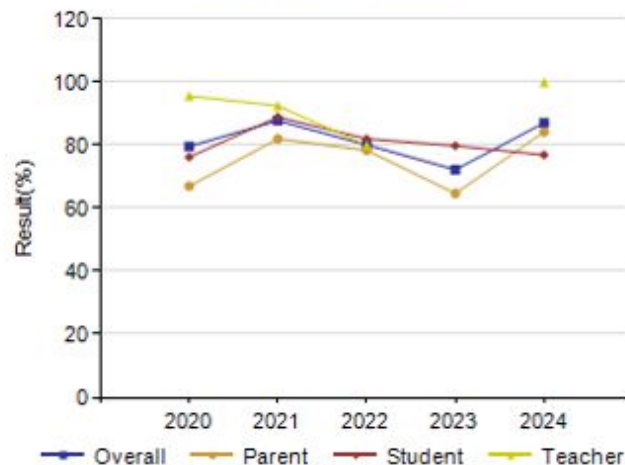
Citizenship – Measure Details

Percentage of teachers, parents and students who are satisfied that students model the characteristics of active citizenship.

| | School | | | | | | | | | | Authority | | | | | | | | | | Province | | | | | | | | | | | | |
|---------|---------|------|------|------|------|------|------|------|------|-------|--------------------|-------------|-----------|-----------|------|------|------|------|------|------|----------|------|------|---------|---------|---------|---------|---------|---------|---------|---------|---------|---------|
| | 2020 | | 2021 | | 2022 | | 2023 | | 2024 | | Measure Evaluation | | | 2020 | | 2021 | | 2022 | | 2023 | | 2024 | | 2020 | | 2021 | | 2022 | | 2023 | | 2024 | |
| | N | % | N | % | N | % | N | % | N | % | Achievement | Improvement | Overall | N | % | N | % | N | % | N | % | N | % | N | % | N | % | N | % | N | % | | |
| | Overall | 86 | 79.6 | 54 | 87.8 | 62 | 80.1 | 52 | 72.2 | 72 | 87.1 | Very High | Improved | Excellent | 975 | 83.5 | 825 | 85.7 | 845 | 83.8 | 943 | 84.3 | 978 | 85.3 | 284,413 | 83.3 | 230,843 | 83.2 | 249,770 | 81.4 | 257,231 | 80.3 | 285,100 |
| Parent | 20 | 87.0 | 10 | 82.0 | 15 | 78.4 | 7 | 84.7 | 19 | 84.2 | Very High | Maintained | Excellent | 158 | 78.5 | 98 | 82.5 | 109 | 81.9 | 147 | 78.9 | 139 | 85.2 | 36,891 | 82.4 | 30,905 | 81.4 | 31,689 | 80.4 | 31,869 | 79.4 | 33,217 | 78.7 |
| Student | 57 | 78.2 | 36 | 88.9 | 40 | 82.0 | 45 | 79.8 | 46 | 78.9 | Very High | Maintained | Excellent | 683 | 78.1 | 605 | 79.3 | 614 | 77.0 | 657 | 81.0 | 698 | 78.6 | 193,577 | 73.8 | 169,741 | 74.1 | 187,120 | 72.1 | 193,015 | 71.3 | 199,816 | 69.6 |
| Teacher | 9 | 95.6 | 8 | 92.5 | 7 | 80.0 | 3 | * | 7 | 100.0 | Very High | Improved | Excellent | 134 | 96.0 | 122 | 95.4 | 122 | 92.6 | 139 | 92.9 | 141 | 92.1 | 33,945 | 93.6 | 30,197 | 94.1 | 30,961 | 91.7 | 32,347 | 90.3 | 32,067 | 89.8 |



Graph of School Results



Student Learning Engagement

Reported by Teacher, Parent and Student results

- Our overall results improved to 82%, but we would like to see more growth in student responses. We are targeting using high yield instructional strategies across the grade levels, and integrating opportunities for students to take leadership roles in both school activities and their learning.

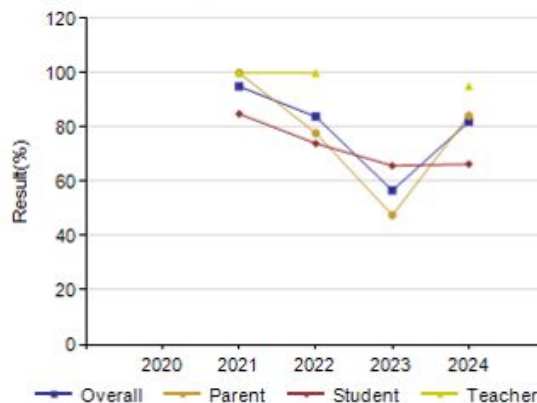
Student Learning Engagement – Measure Details

The percentage of teachers, parents and students who agree that students are engaged in their learning at school.

| | School | | | | | | | | | | Measure Evaluation | | | Authority | | | | | | | | | | Province | | | | | | | | | |
|---------|--------|-----|------|-------|------|-------|------|------|------|------|--------------------|-------------|---------|-----------|-----|------|------|------|------|------|------|------|------|----------|-----|---------|------|---------|------|---------|------|---------|------|
| | 2020 | | 2021 | | 2022 | | 2023 | | 2024 | | Achievement | Improvement | Overall | 2020 | | 2021 | | 2022 | | 2023 | | 2024 | | 2020 | | 2021 | | 2022 | | 2023 | | 2024 | |
| | N | % | N | % | N | % | N | % | N | % | | | | N | % | N | % | N | % | N | % | N | % | N | % | N | % | N | % | N | % | N | % |
| Overall | n/a | n/a | 54 | 95.0 | 62 | 83.9 | 52 | 56.7 | 72 | 82.0 | n/a | Improved | n/a | n/a | n/a | 826 | 86.8 | 845 | 85.8 | 943 | 85.8 | 979 | 83.5 | n/a | n/a | 230,956 | 85.6 | 249,740 | 85.1 | 257,214 | 84.4 | 265,079 | 83.7 |
| Parent | n/a | n/a | 10 | 100.0 | 15 | 77.8 | 7 | 47.8 | 19 | 84.2 | n/a | Improved | n/a | n/a | n/a | 99 | 88.5 | 109 | 88.1 | 147 | 85.6 | 139 | 85.5 | n/a | n/a | 30,994 | 89.0 | 31,694 | 88.7 | 31,862 | 87.3 | 33,209 | 86.7 |
| Student | n/a | n/a | 38 | 84.9 | 40 | 74.0 | 45 | 85.8 | 48 | 86.4 | n/a | Maintained | n/a | n/a | n/a | 605 | 74.8 | 614 | 72.6 | 657 | 74.6 | 699 | 69.7 | n/a | n/a | 189,789 | 71.8 | 187,102 | 71.3 | 193,029 | 70.9 | 199,823 | 69.3 |
| Teacher | n/a | n/a | 8 | 100.0 | 7 | 100.0 | 3 | * | 7 | 95.2 | n/a | Maintained | n/a | n/a | n/a | 122 | 97.0 | 122 | 96.7 | 139 | 97.4 | 141 | 95.5 | n/a | n/a | 30,173 | 96.0 | 30,944 | 95.5 | 32,323 | 95.1 | 32,047 | 95.1 |



Graph of School Results



Welcoming, Caring, Respectful and Safe

Reported by Teacher, Parent and Student results

- We improved - over 90% of students feeling welcomed, cared for, respected and safe.
- We continue to promote a strong connection between school and parents by having more community events at the school.

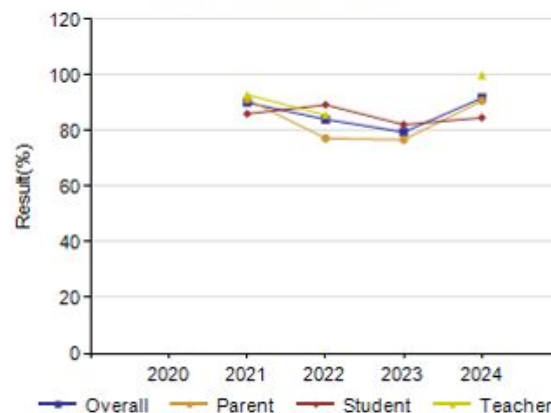
Welcoming, Caring, Respectful and Safe Learning Environments – Measure Details

The percentage of teachers, parents and students who agree that their learning environments are welcoming, caring, respectful and safe.

| | School | | | | | | | | | | Measure Evaluation | | | Authority | | | | | | | | | | Province | | | | | | | | | |
|---------|--------|-----|------|------|------|------|------|------|------|-------|--------------------|-------------|---------|-----------|-----|------|------|------|------|------|------|------|------|----------|-----|---------|------|---------|------|---------|------|---------|------|
| | 2020 | | 2021 | | 2022 | | 2023 | | 2024 | | Achievement | Improvement | Overall | 2020 | | 2021 | | 2022 | | 2023 | | 2024 | | 2020 | | 2021 | | 2022 | | 2023 | | 2024 | |
| | N | % | N | % | N | % | N | % | N | % | | | | N | % | N | % | N | % | N | % | N | % | N | % | N | % | N | % | N | % | N | % |
| Overall | n/a | n/a | 54 | 90.1 | 62 | 84.1 | 52 | 79.5 | 72 | 91.8 | n/a | Improved | n/a | n/a | n/a | 826 | 89.8 | 845 | 87.2 | 943 | 89.5 | 978 | 88.4 | n/a | n/a | 231,091 | 87.8 | 249,941 | 86.1 | 257,391 | 84.7 | 265,321 | 84.0 |
| Parent | n/a | n/a | 10 | 91.3 | 15 | 77.3 | 7 | 76.8 | 19 | 90.8 | n/a | Improved | n/a | n/a | n/a | 99 | 89.5 | 109 | 84.9 | 147 | 87.5 | 139 | 89.0 | n/a | n/a | 30,980 | 88.2 | 31,715 | 86.9 | 31,885 | 85.6 | 33,232 | 85.3 |
| Student | n/a | n/a | 36 | 86.1 | 40 | 89.3 | 45 | 82.2 | 48 | 84.7 | n/a | Maintained | n/a | n/a | n/a | 805 | 82.4 | 614 | 82.0 | 657 | 85.9 | 698 | 83.7 | n/a | n/a | 189,900 | 79.8 | 187,258 | 77.7 | 193,156 | 76.6 | 200,020 | 75.2 |
| Teacher | n/a | n/a | 8 | 92.9 | 7 | 85.7 | 3 | ^ | 7 | 100.0 | n/a | Improved | n/a | n/a | n/a | 122 | 97.4 | 122 | 94.7 | 139 | 95.1 | 141 | 92.6 | n/a | n/a | 30,211 | 95.3 | 30,968 | 93.6 | 32,350 | 92.0 | 32,069 | 91.6 |



Graph of School Results



Access to Supports & Services

Reported by Teacher, Parent and Student results

- We improved to an overall 84% of stakeholders feeling students have access to supports and services at school.
- We have our Family School Liaison 2 days a week, CARS provides programming, we have SLP, OT and IEC supports available and will continue to ensure parents are aware of the supports and services available at BVS.

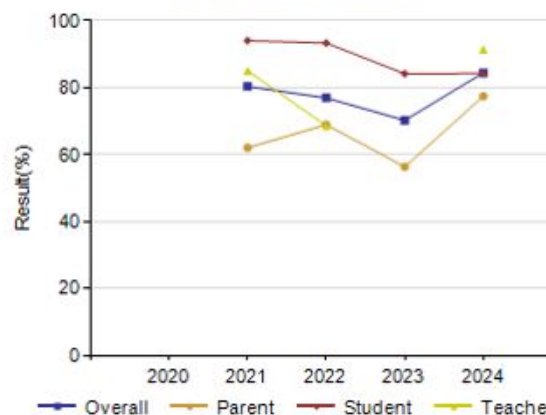
Access to Supports & Services – Measure Details

The percentage of teachers, parents and students who agree that students have access to the appropriate supports and services at school.

| | School | | | | | | | | | | Authority | | | | | | | | | | Province | | | | | | | | | | | | |
|---------|--------|-----|------|------|------|------|------|------|------|------|--------------------|-------------|---------|------|-----|------|------|------|------|------|----------|------|------|------|-----|---------|------|---------|------|---------|------|---------|------|
| | 2020 | | 2021 | | 2022 | | 2023 | | 2024 | | Measure Evaluation | | | 2020 | | 2021 | | 2022 | | 2023 | | 2024 | | 2020 | | 2021 | | 2022 | | 2023 | | 2024 | |
| | N | % | N | % | N | % | N | % | N | % | Achievement | Improvement | Overall | N | % | N | % | N | % | N | % | N | % | N | % | N | % | N | % | N | % | | |
| Overall | n/a | n/a | 54 | 80.3 | 62 | 76.9 | 52 | 70.2 | 72 | 84.4 | n/a | Improved | n/a | n/a | n/a | 826 | 83.6 | 845 | 83.6 | 942 | 86.8 | 977 | 84.0 | n/a | n/a | 230,761 | 82.6 | 249,570 | 81.6 | 256,994 | 80.6 | 264,733 | 79.9 |
| Parent | n/a | n/a | 10 | 62.0 | 15 | 68.9 | 7 | 56.3 | 19 | 77.4 | n/a | Maintained | n/a | n/a | n/a | 99 | 76.8 | 109 | 77.2 | 146 | 79.9 | 139 | 83.9 | n/a | n/a | 30,936 | 78.9 | 31,684 | 77.4 | 31,847 | 75.7 | 33,177 | 75.4 |
| Student | n/a | n/a | 36 | 94.0 | 40 | 93.3 | 45 | 84.1 | 46 | 84.2 | n/a | Maintained | n/a | n/a | n/a | 605 | 83.4 | 614 | 85.4 | 657 | 88.7 | 697 | 83.8 | n/a | n/a | 169,631 | 80.2 | 186,935 | 80.1 | 192,805 | 79.9 | 199,516 | 78.7 |
| Teacher | n/a | n/a | 8 | 85.0 | 7 | 88.6 | 3 | * | 7 | 91.4 | n/a | Improved | n/a | n/a | n/a | 122 | 90.7 | 122 | 88.3 | 139 | 91.9 | 141 | 84.3 | n/a | n/a | 30,194 | 88.7 | 30,951 | 87.3 | 32,342 | 86.2 | 32,040 | 85.6 |



Graph of School Results



Parental Involvement

Reported by Teacher and Parent results

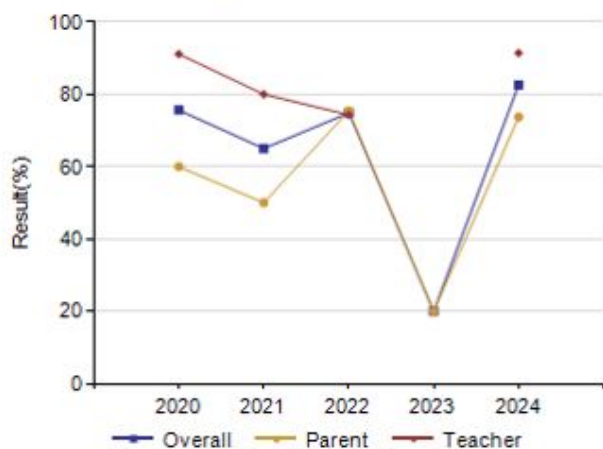
- This is an area of growth for BVS, we improved significantly from last year's results. We continue to work diligently to connect with parents to ensure their voice is heard at the school level. We have an active School Council, Friends of BVS group and love having parent volunteers in the school often!

Parental Involvement – Measure Details

Percentage of teachers and parents satisfied with parental involvement in decisions about their child's education.

| | School | | | | | | | | | | Measure Evaluation | | | Authority | | | | | | | | Province | | | | | | | | | | | |
|---------|--------|------|------|------|------|------|------|------|------|------|--------------------|------------------------|-----------|-----------|------|------|------|------|------|------|------|----------|------|--------|------|--------|------|--------|------|--------|------|--------|------|
| | 2020 | | 2021 | | 2022 | | 2023 | | 2024 | | Achievement | Improvement | Overall | 2020 | | 2021 | | 2022 | | 2023 | | 2024 | | 2020 | | 2021 | | 2022 | | 2023 | | 2024 | |
| | N | % | N | % | N | % | N | % | N | % | | | | N | % | N | % | N | % | N | % | N | % | N | % | N | % | N | % | N | % | N | % |
| Overall | 29 | 75.6 | 18 | 65.0 | 21 | 74.8 | 7 | 20.0 | 26 | 82.6 | Very High | Improved Significantly | Excellent | 292 | 83.4 | 220 | 79.7 | 230 | 80.4 | 286 | 83.4 | 280 | 82.2 | 70,377 | 81.8 | 60,919 | 79.5 | 62,412 | 78.8 | 63,935 | 79.1 | 64,949 | 79.5 |
| Parent | 20 | 60.0 | 10 | 50.0 | 14 | 75.4 | 7 | 20.0 | 19 | 73.7 | Very High | Improved | Excellent | 158 | 71.2 | 98 | 66.2 | 108 | 71.8 | 147 | 72.0 | 139 | 78.4 | 36,556 | 73.9 | 30,886 | 72.2 | 31,598 | 72.3 | 31,720 | 72.5 | 33,070 | 74.4 |
| Teacher | 9 | 91.1 | 8 | 80.0 | 7 | 74.3 | 3 | * | 7 | 91.4 | High | Maintained | Good | 134 | 95.6 | 122 | 93.2 | 122 | 88.9 | 139 | 94.9 | 141 | 88.0 | 33,821 | 89.6 | 30,033 | 86.8 | 30,814 | 85.2 | 32,215 | 85.7 | 31,879 | 84.6 |

Graph of School Results



Education Quality

Reported by Teacher, Parent and Student results

- We improved significantly overall in this measure.
- As a staff we continue to meet students at their level academically, develop a growth mindset and make parents an integral part of the learning process and community at BVS.

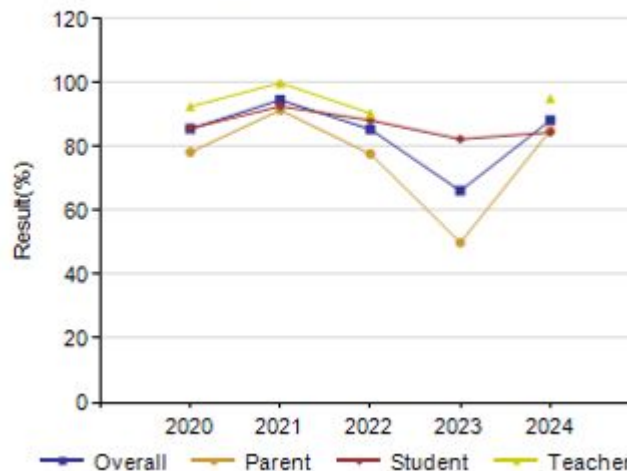
Education Quality – Measure Details

Percentage of teachers, parents and students satisfied with the overall quality of basic education.

| | School | | | | | | | | | | Authority | | | | | | | | | | Province | | | | | | | | | | | | |
|---------|--------|------|------|-------|------|------|------|------|------|------|--------------------|-------------|------------|------|------|------|------|------|------|------|----------|------|------|---------|------|---------|------|---------|------|---------|------|---------|------|
| | 2020 | | 2021 | | 2022 | | 2023 | | 2024 | | Measure Evaluation | | | 2020 | | 2021 | | 2022 | | 2023 | | 2024 | | 2020 | | 2021 | | 2022 | | 2023 | | 2024 | |
| | N | % | N | % | N | % | N | % | N | % | Achievement | Improvement | Overall | N | % | N | % | N | % | N | % | N | % | N | % | N | % | N | % | | | | |
| Overall | 86 | 85.6 | 54 | 94.7 | 62 | 85.5 | 52 | 66.2 | 72 | 88.3 | High | Improved | Good | 975 | 88.5 | 824 | 89.9 | 844 | 89.4 | 943 | 89.8 | 979 | 89.5 | 264,623 | 90.3 | 230,814 | 89.6 | 249,532 | 89.0 | 257,584 | 88.1 | 265,643 | 87.6 |
| Parent | 20 | 78.3 | 10 | 91.5 | 15 | 77.8 | 7 | 50.0 | 19 | 85.1 | Very High | Improved | Excellent | 158 | 82.9 | 99 | 88.5 | 109 | 85.8 | 147 | 84.3 | 139 | 85.5 | 36,907 | 86.7 | 31,024 | 86.7 | 31,728 | 86.1 | 31,890 | 84.4 | 33,250 | 83.8 |
| Student | 57 | 85.8 | 36 | 92.7 | 40 | 88.3 | 45 | 82.4 | 46 | 84.5 | Intermediate | Maintained | Acceptable | 683 | 86.0 | 603 | 85.3 | 612 | 87.1 | 657 | 89.7 | 699 | 88.4 | 193,763 | 87.8 | 169,589 | 88.3 | 186,834 | 85.9 | 193,343 | 85.7 | 200,322 | 84.9 |
| Teacher | 9 | 92.6 | 8 | 100.0 | 7 | 90.5 | 3 | * | 7 | 95.2 | Intermediate | Maintained | Acceptable | 134 | 96.6 | 122 | 97.9 | 123 | 95.5 | 139 | 95.4 | 141 | 94.7 | 33,953 | 96.4 | 30,201 | 95.7 | 30,970 | 95.0 | 32,351 | 94.4 | 32,071 | 93.9 |



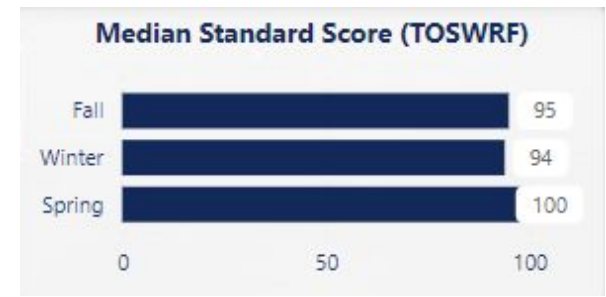
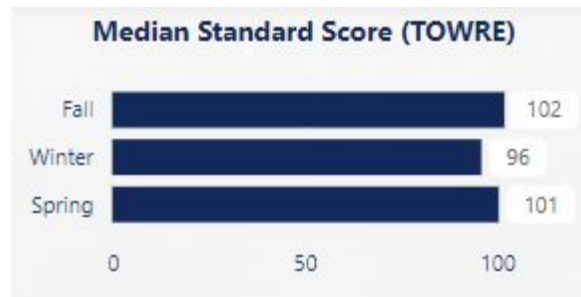
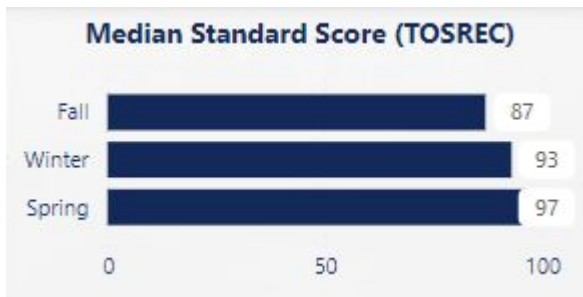
Graph of School Results



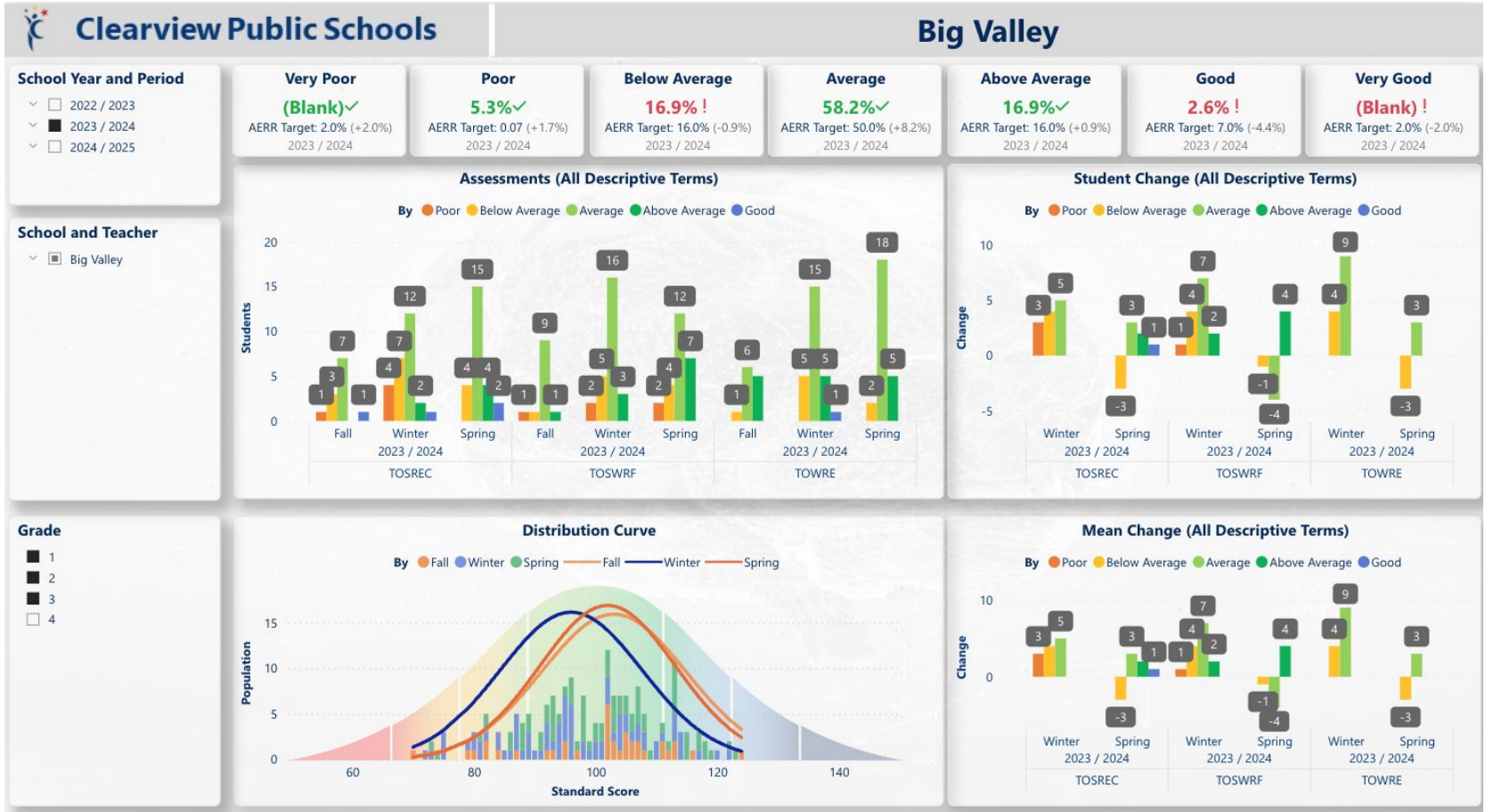
Grade 1-3: Literacy Data

3T

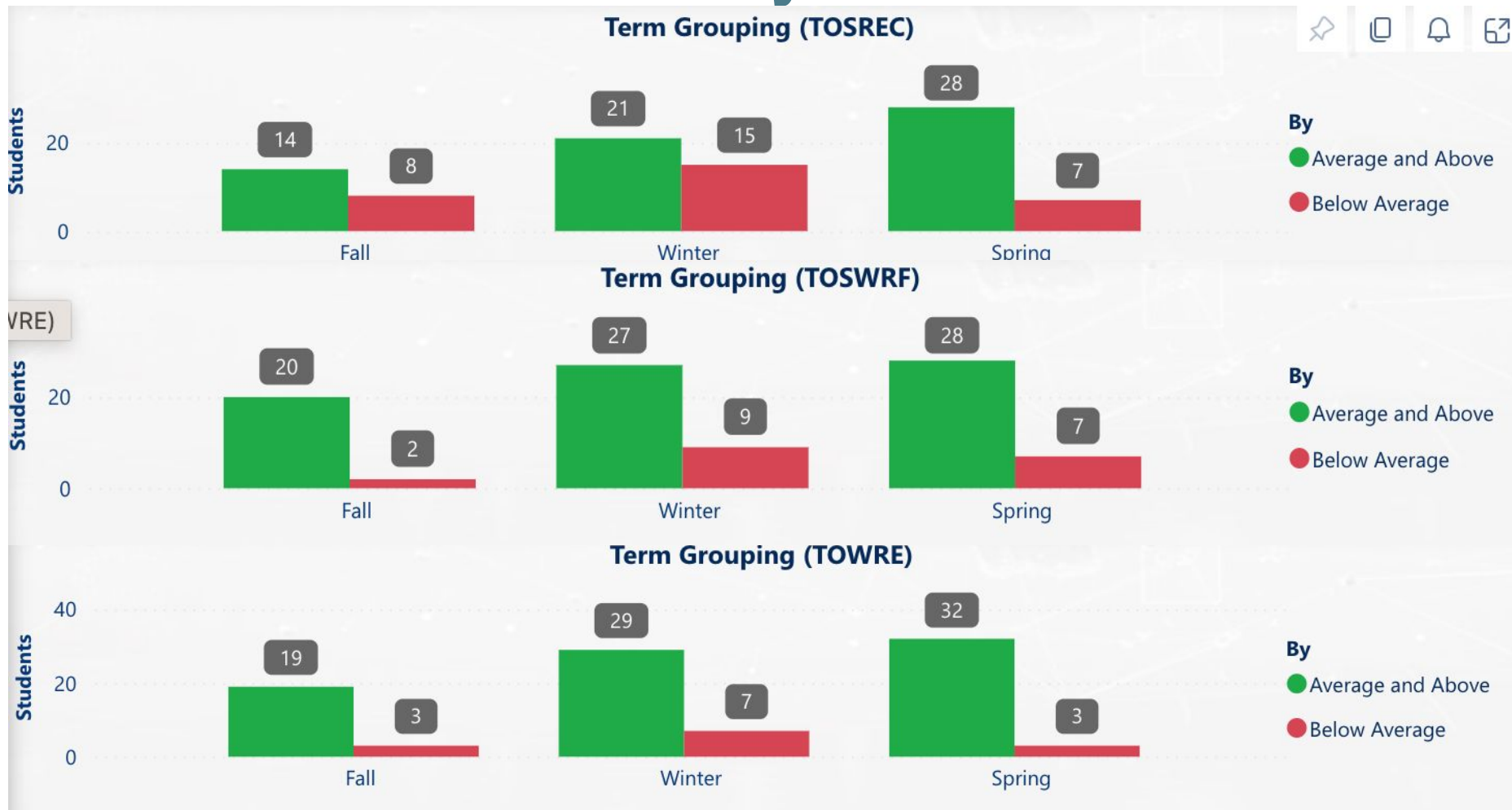
According to our 3T, the median standard score on our Reading Comprehension (TOSREC), Decoding (TOWRE), and Fluency (TOSWRF) benchmarks were all within the average range. There was consistent growth in all three areas. The grade 1s were assessed in Winter and Spring, whereas the Grade 2 and 3s were assessed in Fall, Winter and Spring.



Grade 1-3: Literacy Data Analysis



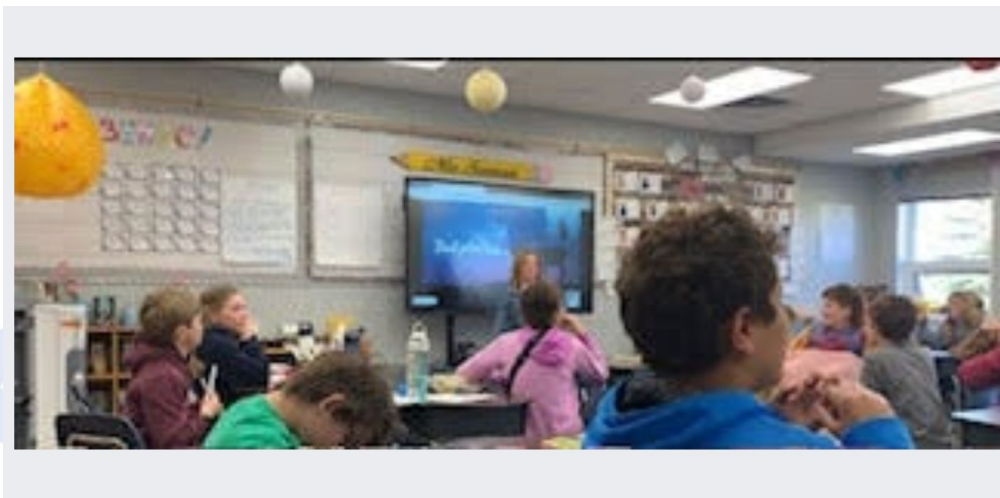
Grade 1-3: Literacy Data Analysis



- The increase in students considered below average in the winter term is a result of the Grade 1 group being assessed for the first time. The numbers halved by the spring assessment.
- Science of Reading strategies and use of programs including Heggerty and UFLI were implemented to support reading in grades 1-3.

Grade 1-3: Numeracy Data

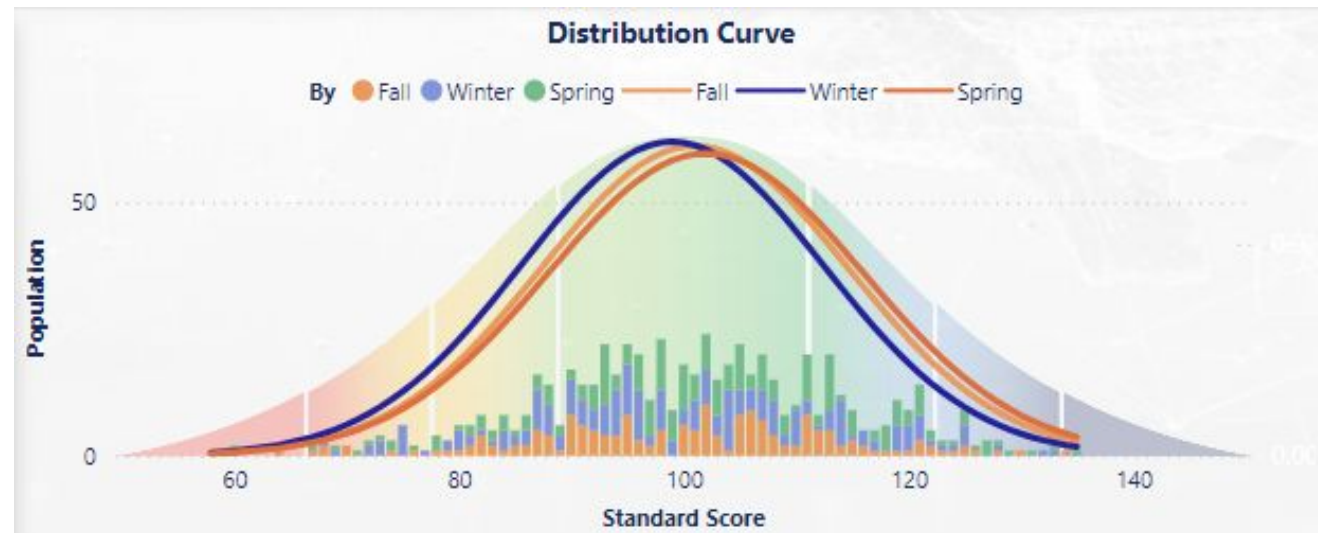
According to our provincial numeracy data, there was one student in Grade 1, and 3 students in Grade 2 that required additional support by June. Teachers continue to employ guided math strategies and small group instruction to ensure each student has lessons tailored to their ability level. We have also added additional support time to the Grade 5/6 group twice a week to support math instruction.



Academic Achievement - Local data

Literacy:
2023/2024 3T Data

- We had consistent growth in fluency, decoding and reading comprehension from the fall to the spring benchmarking.



Learning Disruption

How did your school and staff address and mitigate learning gaps at all grade and subject areas?

- To support learning disruption in literacy we incorporated the 3T benchmarks 3 times a year. These measure student's reading comprehension, fluency and decoding skills. Using the data, we can scaffold learning in areas that students need extra support. Our division continues to promote Science of Reading strategies and collaboration between teachers.
- In numeracy, we have used the numeracy screeners in grades 1-3 and tailored instruction to areas students need extra support. We also piloted a division wide math assessment last year. Guided math stations are utilized in other classes as a way for teachers to ensure their instruction is responsive to student needs. The school division is offering numeracy PD for teachers to collaborate on curricular resources.



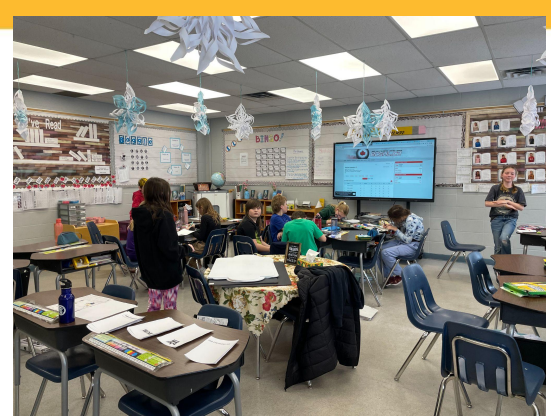
FNMI Results

Results: Big Valley School does not have enough FNMI students to publish results.

Strategies: Big Valley staff work to provide opportunities to learn about FNMI culture, traditions, and history. We are supported by Clearview School Division through a committee that brings teachers together from all the schools in Clearview School Division to support teachers with resources and programming which contributes to student growth in foundational FNMI knowledge.



Staff development



Big Valley along with Clearview School Division continues to work with Stu Henry on ways to develop leadership skills across the division. We have a number of staff that have taken on leadership roles in the building including our leads in the ATA, our FNMI Committee, and our Wellness Influencer.

Literacy Professional Development continues to be a focus this year in our School Division. We have been working with Miriam Ramzy and Michelle Bence to enhance our literacy instruction in order to meet the needs of every student in our building. Teachers met in grade level teams last year to share resources for the new ELA curriculum in grades 1-6. We have started a division wide writing prompt to gather data on student writing achievement and ways to improve literacy skills division wide.

Numeracy is an area of focus this year for PD. We are meeting as grade level teams throughout the year to develop numeracy resources for grades 1-9. We are also working at the school level to implement guided math as a numeracy instructional practice.

Stakeholder engagement

- Parents have been engaged in school priorities through presentations and feedback during school council and community consultation meetings.
- The AERR survey has also enabled us to gain feedback and insight into parent's views on their child's education.
- Staff and parents were presented with the Education Plan at the time it was created. A collaborative approach will be utilized where the education plan is revisited by stakeholders in order to ensure we are accountable to achieving the goals set.
- Students are a very important part of planning for the future. They will have their voices heard throughout the process of creating and implementing the Education Plan moving forward.



Trends

- Our school culture is an area that we have worked hard to improve and will continue to focus on. Our data has improved in all areas of the accountability report.



Challenges

- We continue to seek opportunities for student and parent voice in learning activities.
- We are working to improve our inclusive practices to impact student success in all areas.
- We are continuing our work to improve students' literacy skills to help them have the skills to be strong readers and writers.
- We are continuing to improve our students' numeracy skills to help them have the skills to use math to obtain a career, and to support them in their daily life.



Greatest Successes

- We are proud of the hard work and dedication of the staff, students and parents for all of their hard work in making Big Valley a great place to be! We are thankful for the parents that have volunteered throughout the year and made our school events a resounding success!
- Our junior highs have taken on a leadership role in the building planning assemblies and Holiday activities. They have participated in buddy lunches with the elementary classes and have been mentors to the younger grades.



What People Say About Our School

- It's a small school with big heart! The staff cares about its students. Small class sizes can mean more attention and more connection. Your kids will grow up with the same students and make lasting friends. ~Big Valley School parent
- We love the advantage of small town teacher student ratios! The advantage of teachers personally knowing every child, their needs, and being able to plan and create curriculums that focus on each student's personal advancement. Ability to keep those students who are ahead focused and challenged, as well as to get those who require additional coaching to be afforded those resources to get them back on track. There is also a strong emphasis on community, communication and development on appropriate behaviours the child will need in school and outside school!~ Big Valley School parent



Planning for 2024-2027

- We continue our work on creating a positive learning environment for our students and increasing community engagement.

BVS Education Plan 2024-2027



Clearview School Division Education Plan, 2024-27

Contact Us!

- Christine Peterson - Principal
- cpeterson@clearview.ab.ca
- Facebook - Big Valley School
- 403-876-2271